



IRIS

Dining Chair and Counter Stool

Description The Iris collection achieves

the perfect balance between style and comfort, featuring woven PU and recycled leather that nods to classic mid-century upholstery techniques while maintaining a modern, timeless appeal. Available in two colour choices—a black powder-coated frame with nutmeg leather, and a taupe powder-coated frame with matching taupe leather—this collection offers both aesthetics and durability. The sturdy steel frame ensures long-lasting strength, while the woven leather upholstery provides resilience and comfort. Ideal for both classic or modern dining settings, the Iris range delivers both visual appeal and lasting reliability.



Features

Includes recycled Materials

Comfortable woven upholstery

Steel frame

Material

Woven recycled leather upholstery with powder-coated steel frame.

Warranty

All of our product is backed by a 12 month structural warranty.

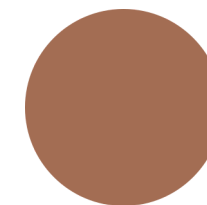
Dimensions



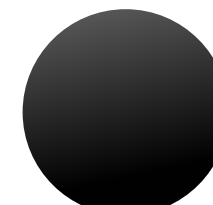
Dining Chair
480W x 550D x 815H



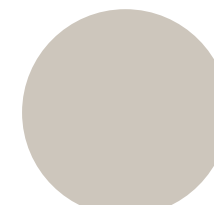
Counter Stool
480W x 530D x 940H



NUTMEG
PU



BLACK
POWDER-COATED
STEEL



TAUPE
RECYCLED
LEATHER



TAUPE
POWDER-COATED
STEEL